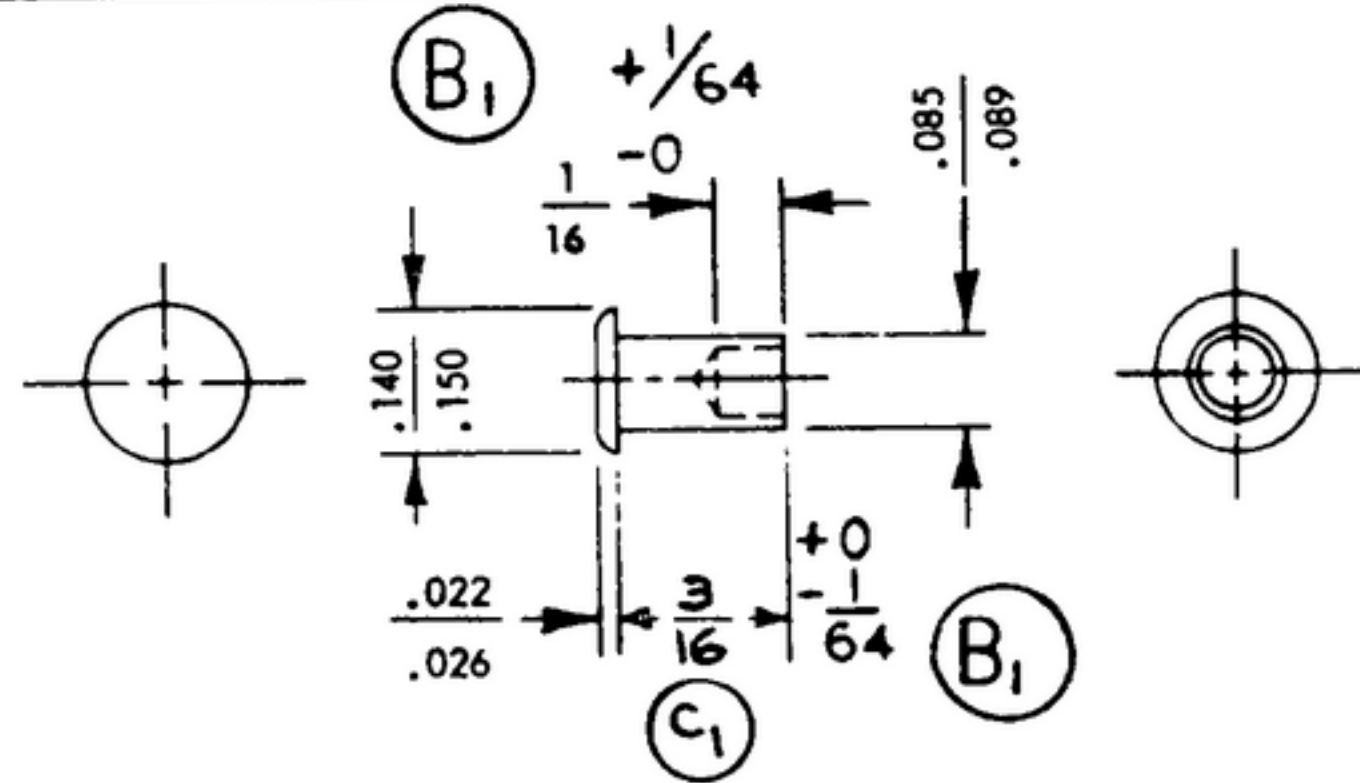


NOTICE - WHEN GOVERNMENT DRAWINGS, SPECIFICATIONS, OR OTHER DATA ARE USED FOR ANY PURPOSE OTHER THAN IN CONNECTION WITH A DEFINITELY RELATED GOVERNMENT PROCUREMENT OPERATION, THE UNITED STATES GOVERNMENT THEREBY INCURS NO RESPONSIBILITY NOR ANY OBLIGATION WHATSOEVER AND THE FACT THAT THE GOVERNMENT MAY HAVE FORMULATED, FURNISHED, OR IN ANY WAY SUPPLIED THE SAID DRAWINGS, SPECIFICATIONS, OR OTHER DATA IS NOT TO BE REGARDED BY IMPLICATION OR OTHERWISE AS IN ANY MANNER LICENSING THE HOLDER OR ANY OTHER PERSON OR CORPORATION, OR CONVEYING ANY RIGHTS OR PERMISSION TO MANUFACTURE, USE, OR SELL ANY PATENTED INVENTION THAT MAY IN ANY WAY BE RELATED THERETO.

"THIS DOCUMENT HAS BEEN PURCHASED BY THE GOVERNMENT AND MAY BE REPRODUCED AND USED IN CONNECTION WITH ANY GOVERNMENT PROCUREMENT OR MAINTENANCE OPERATION."

NOTE:
DATA MARKED BY AN ASTERISK (*) ARE FOR INFORMATION ONLY. CONTRACTOR MAY, AT HIS OPTION, DEVIATE FROM THESE DETAILS

REVISIONS			
SYM	DESCRIPTION	DATE	APPROVAL
A ₁	A ₁ - ADDED NEW APPL SM-D-343618	27 JAN 60	42428-PC-59
—	RETRACED, NO CHANGE	10 JULY 62	21582-PC-61
B	(1) ADDED TOLERANCES TO DIM.	10 APR 63	21582-PC-61 REV'D PME
C ₁	C ₁ - $\frac{3}{16}$ WAS $\frac{5}{32}$	21 NOV 1966	6-00189 REV'D PME



NOTES:

1. PART MAY BE # R-4008 AS SUPPLIED BY CHICAGO RIVET CO., BELLWOOD, ILL., OR EQUAL, PROVIDING IT MEETS THE FOLLOWING REQUIREMENTS AND DIMENSIONS SHOWN.

MATERIAL: ALUMINUM ALLÖY

FINISH: E 513 PER SPEC MIL-F-14072

~~EAC No. 1500 0446~~

REQD	PART NO.	DESCRIPTION	MATL	MATL SPEC
LIST OF MATERIAL				

A ₁	UNLESS OTHERWISE SPECIFIED		COLLINS RADIO CO. CEDAR RAPIDS, IO		RIVET-TUBULAR	DEPARTMENT OF THE ARMY U. S. ARMY SIGNAL MATERIEL SUPPORT AGENCY FORT MONMOUTH NEW JERSEY SM-B-249258 CODE 80063	
	DIMENSIONS ARE IN INCHES		14214-PH-51-93				
	TOLERANCES ON		SIGNAL CORPS				
	SM-D-343618	SC-DL-248775	FRACTIONS	DECIMALS			ANGLES
	SM-D-144439	SC-DL-143280	$\pm 1/64$	$\pm .005$			$\pm 1^\circ$
SM-D-144969	SC-DL-144500	DRAWN BY <i>HAMES</i>		REVIEWED	PME		
SM-D-249138	SC-DL-248775	DATE		APPROVED	HLY PME		
NEXT ASSY	USED ON	CHECKED BY		DATE	16 JAN 56	SCALE	4 / 1
APPLICATION		APPROVED BY					

WHEN REFERRING TO THIS DRAWING STATE DRAWING NO., APPLICABLE ISSUE SYMBOL, IF ANY, AND DATE.